

AXIS P33 Network Camera Series

Fixed domes for any environment with remote focus and zoom.



- > Superb video quality in 5 MP and HDTV
- > Multiple H.264 video streams
- > Remote focus and zoom
- > Outdoor ready
- > Digital PTZ and multi-view streaming
- > P-Iris control

AXIS P33 Network Cameras constitute a series of indoor and outdoor-ready fixed domes. These cameras are ideal for unobtrusive video surveillance, day and night, in exposed areas such as airports, subways, retail stores, schools and university campuses.

AXIS P33 Series offers models from SVGA resolution up to 5 megapixel, and including support for SMPTE standard-compliant HDTV 720p and 1080p video. The 5 megapixel models can cover a large area with exceptional detail and light sensitivity.

The remote focus capability allows for convenient installation, eliminating hands-on focusing at the camera. The remote zoom and pixel counter features ensure that the camera's angle of view is optimized for the area to be monitored and the required pixel resolution.

The 3- and 5-megapixel models support the unique and revolutionary P-Iris control, which allows the cameras to precisely control the iris position to optimize depth of field and lens resolution for optimal image clarity.

AXIS P33 Series provides multiple, individually configurable H.264 and Motion JPEG video streams. All AXIS P33 cameras offer digital pan/tilt/zoom and the 3-megapixel and 5-megapixel models additionally provide multi-view streaming.

AXIS P33 Series ranges from indoor cameras to vandal-resistant outdoor models. They have low, environment-friendly power consumption, supplied by standard Power over Ethernet (IEEE 802.3af). This is the case even for the weatherproof models that operate in extreme temperatures from -40° to 55° C (-40° to 131 °F).



Fixed domes designed for efficient installation – indoors or outdoors

AXIS P33 Series is the perfect choice for a wide range of demanding video applications in outdoor and indoor environments. AXIS P33 Network Cameras are designed for professional video surveillance with easy and reliable installation in focus.

Outdoor-ready installation for extreme temperatures

The outdoor models of AXIS P33 Series are specially designed for reliable, vandal-resistant and weather-proof installation, with pre-installed heater and fan, and an integrated dehumidifying membrane eliminating any humidity caught in the camera casing during installation. These cameras come with a 5 m (16 ft.) Ethernet cable with a pre-mounted, specially designed gasket, enabling flush wall mounting and requiring no additional sealant. A weather shield is also included for effective protection against reflections from sunlight, or build-ups of rain or snow.

Mounting options

AXIS P33 Series offers a wide range of optional kits for indoor and outdoor installations, for example, for mounting on a wall, pole or corner. The IP51-rated drop ceiling mount kit protects the camera from condensation and dust that may exist in the plenum space above the drop ceiling. Both indoor and outdoor

camera models include a smoked transparent cover as an alternative to the clear cover, for additional flexibility.

Easy installation with remote focus and zoom

AXIS P33 Network Cameras offer unique installation capabilities with remote focus and zoom. The remote focus feature enables convenient focusing over the network, eliminating the need for hands-on fine-tuning at the camera. The remote zoom functionality ensures that the camera's angle of view is optimized for the area to be monitored.

Unique pixel counter feature

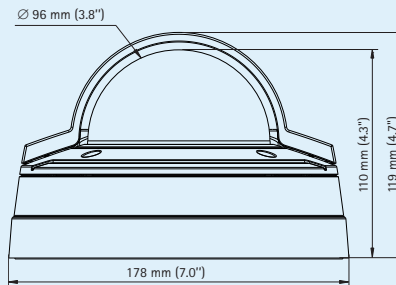
The unique pixel counter offered in Axis cameras allows the installer to easily verify that the camera installation fulfills any regulatory or specific customer requirements, for example, calculating the pixel resolution of the face of a person passing a doorway monitored by the camera.



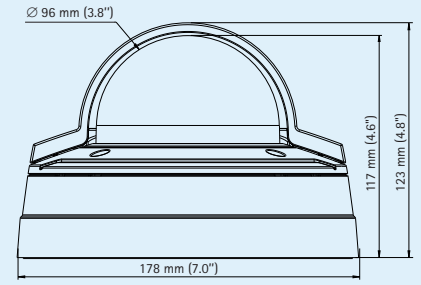
Unique pixel counter feature



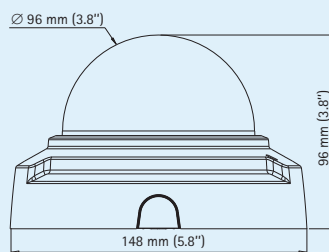
AXIS P3343/-VE and AXIS P3344/-VE
Weight: 1.6 kg (3.5 lb.) with weather shield



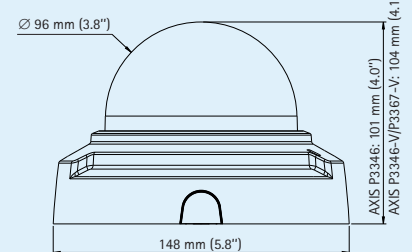
AXIS P3346-VE and AXIS P3367-VE
Weight: 1.7 kg (3.7 lb.) with weather shield



AXIS P3343 and AXIS P3344
Weight: 450 g (1.0 lb.)
AXIS P3343-V and AXIS P3344-V
Weight: 660 g (1.5 lb.)



AXIS P3346
Weight: 490 g (1.1 lb.)
AXIS P3346-V and AXIS P3367-V
Weight: 700 g (1.6 lb.)



Model Specifications – AXIS P33 Network Camera Series

Model type	Resolution			
	SVGA	1 MP / HDTV 720p	3 MP / HDTV 1080p	5 MP / HDTV 1080p
Tamper-resistant, indoor	AXIS P3343 6 mm AXIS P3343 12 mm	AXIS P3344 6 mm AXIS P3344 12 mm	AXIS P3346	
Vandal-resistant, indoor	AXIS P3343-V 6 mm AXIS P3343-V 12 mm	AXIS P3344-V 6 mm AXIS P3344-V 12 mm	AXIS P3346-V	AXIS P3367-V
Vandal-resistant, outdoor	AXIS P3343-VE 6 mm AXIS P3343-VE 12 mm	AXIS P3344-VE 6 mm AXIS P3344-VE 12 mm	AXIS P3346-VE	AXIS P3367-VE

Note: AXIS P3301/-V and AXIS P3304/-V are not part of AXIS P33 Series

Technical Specifications – AXIS P33 Network Camera Series

Camera		Video streaming
Image sensor	AXIS P3343/-V/-VE and AXIS P3344/-V/-VE: Progressive scan RGB CMOS 1/4" AXIS P3346/-V/-VE: Progressive scan RGB CMOS 1/3" (effective) AXIS P3367/-V/-VE: Progressive scan RGB CMOS 1/3.2"	Multiple, individually configurable streams, H.264 and Motion JPEG Controllable frame rate and bandwidth VBR/CBR H.264
Lens	Varifocal remote zoom and focus, IR corrected, megapixel resolution AXIS P3343/-V/-VE 6 mm: 2.5-6 mm, 72°-34° view*, F1.2, DC-iris AXIS P3343/-V/-VE 12 mm: 3.3-12 mm, 54°-17° view*, F1.4, DC-iris AXIS P3344/-V/-VE 6 mm: 2.5-6 mm, 87°-40° view*, F1.4, DC-iris AXIS P3344/-V/-VE 12 mm: 3.3-12 mm, 70°-20° view*, F1.6, DC-iris AXIS P3346/-V/-VE: 3-9 mm, 84°-30° view*, F1.2, P-Iris AXIS P3367/-V/-VE: 3-9 mm, 84°-30° view*, F1.2, P-Iris *horizontal angle of view	Multi-view streaming Up to 8 individually cropped out view areas Digital PTZ, preset positions, guard tour AXIS P3346/-V/-VE: When streaming 4 view areas and 1 overview in VGA resolution, the frame rate is 20 fps per stream (3 MP capture mode) AXIS P3367/-V/-VE: When streaming 4 view areas and 1 overview in VGA resolution, the frame rate is 12 fps per stream (5 MP capture mode) or 20 fps per stream (3 MP capture mode)
Day and night	Automatically removable infrared-cut filter	Image settings Compression, color, brightness, sharpness, contrast, white balance, exposure control, exposure zones, backlight compensation, wide dynamic range – dynamic contrast, fine tuning of low light behavior Rotation: 0°, 90°, 180°, 270°, including Corridor Format Text and image overlay, privacy mask, mirroring of images
Minimum illumination	AXIS P3343/-V/-VE 6 mm: Color: 0.2 lux, F1.2, B/W: 0.04 lux, F1.2 AXIS P3343/-V/-VE 12 mm: Color: 0.3 lux, F1.4, B/W: 0.05 lux, F1.4 AXIS P3344/-V/-VE 6 mm: Color: 0.3 lux, F1.4, B/W: 0.05 lux, F1.4 AXIS P3344/-V/-VE 12 mm: Color: 0.4 lux, F1.6, B/W: 0.06 lux, F1.6 AXIS P3346/-V/-VE: Color: 0.5 lux, F1.2, B/W: 0.08 lux, F1.2 AXIS P3367/-V/-VE: Color: 0.2 lux, B/W: 0.04 lux, F1.2	Audio Audio streaming Two-way Audio compression AAC LC 8/16 kHz, G.711 PCM 8 kHz, G.726 ADPCM 8 kHz Configurable bit rate Audio input/output External microphone input or line input, line output AXIS P3343/-V, AXIS P3344/-V, AXIS P3346/-V and AXIS P3367/-V: Built-in microphone
Shutter time	AXIS P3343/-V/-VE and AXIS P3344/-V/-VE: 1/25000 s to 1/6 s AXIS P3346/-V/-VE: 1/35500 s to 1/6 s AXIS P3367/-V/-VE: 1/28000 s to 2 s	Network Security Password protection, IP address filtering, digest authentication, user access log, IEEE 802.1X** network access control, HTTPS** encryption
Pan/Tilt/Zoom	Digital PTZ, preset positions, guard tour	Supported protocols IPv4/v6, HTTP, HTTPS**, QoS Layer 3 DiffServ, FTP, SMTP, Bonjour, UPnP, SNMPv1/v2c/v3(MIB-II), DNS, DynDNS, NTP, RTSP, RTP, TCP, UDP, IGMP, RTCP, ICMP, DHCP, ARP, SOCKS
Camera angle adjustment	AXIS P3343/-V/-VE and AXIS P3344/-V/-VE: Pan 360°, tilt 170°, rotation 340° AXIS P3346/-V/-VE and AXIS P3367/-V/-VE: Pan 360°, tilt 160°, rotation 340°	System integration Application Programming Interface Open API for software integration, including the ONVIF specification available at www.onvif.org , as well as VAPIX® and AXIS Camera Application Platform from Axis Communications, specifications available at www.axis.com Support for AXIS Video Hosting System (AVHS) with One-Click Camera connection
Video		Intelligent video Video motion detection, active tampering alarm, audio detection Support for AXIS Camera Application Platform enabling installation of additional applications
Video compression	H.264 (MPEG-4 Part 10/AVC) Motion JPEG AXIS P3343/-V/-VE, AXIS P3344/-V/-VE, AXIS P3346/-V/-VE: H.264 Baseline Profile AXIS P3367/-V/-VE: H.264 Baseline and Main Profile	Events Intelligent video, external input
Resolutions	AXIS P3343/-V/-VE: 800x600 (SVGA) to 160x90 AXIS P3344/-V/-VE: 1280x800* (1 MP) to 160x90 AXIS P3346/-V/-VE: 2048x1536 (3 MP) to 160x90 AXIS P3367/-V/-VE: 2592x1944 (5 MP) to 160x90 *1440x900 (1.3 MP) scaled resolution available via VAPIX®	Alarm actions File upload via FTP, HTTP and email Notification via email, HTTP and TCP External output activation Video and audio recording to edge storage Pre- and post-alarm video buffering
Frame rate H.264	AXIS P3343/-V/-VE and AXIS P3344/-V/-VE: 30 fps in all resolutions AXIS P3346/-V/-VE: 3 MP capture mode: 20 fps in all resolutions, HDTV 1080p (1920x1080) and 2 MP 4:3 (1600x1200) capture modes: 30 fps in all resolutions AXIS P3367/-V/-VE: 5 MP capture mode: 12 fps in all resolutions; and capable of all AXIS P3346 capture modes	Installation aids in software Remote zoom, remote focus, pixel counter
Frame rate Motion JPEG	AXIS P3343/-V/-VE and AXIS P3344/-V/-VE: 30 fps in all resolutions AXIS P3346/-V/-VE: 3 MP capture mode: 20 fps in all resolutions, HDTV 1080p (1920x1080) and 2 MP 4:3 (1600x1200) capture modes: 30 fps in all resolutions AXIS P3367/-V/-VE: 5 MP capture mode: 12 fps in all resolutions; and capable of all AXIS P3346 capture modes	

** This product includes software developed by the OpenSSL Project for use in the OpenSSL Toolkit. (www.openssl.org)

Technical Specifications (continued) – AXIS P33 Network Camera Series

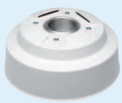
General	
Casing	Polycarbonate transparent cover Aluminum inner camera module with encapsulated electronics Color: white NCS S 1002-B AXIS P3343/P3344/P3346: Tamper-resistant polycarbonate casing AXIS P3343-V/P3344-V: 1000 kg (2200 lb.) impact-resistant aluminum casing AXIS P3346-V/P3367-V: IK10 impact-resistant aluminum casing AXIS P3343-VE/P3344-VE: IP66- and NEMA 4X-rated, 1000 kg (2200 lb.) impact-resistant aluminum casing with integrated dehumidifying membrane AXIS P3346-VE/P3367-VE: IP66- and NEMA 4X-rated, IK10 impact-resistant aluminum casing with integrated dehumidifying membrane
Processor and memory	AXIS P3343-V/-VE and AXIS P3344-V/-VE: ARTPEC-3, 128 MB RAM, 128 MB Flash AXIS P3346-V/-VE: ARTPEC-3, 256 MB RAM, 128 MB Flash AXIS P3367-V/-VE: ARTPEC-4, 512 MB RAM, 128 MB Flash
Power	Power over Ethernet IEEE 802.3af AXIS P3343-V, AXIS P3344-V, AXIS P3346-V and AXIS P3367-V: Class 2 AXIS P3343-VE/P3344-VE/P3346-VE/P3367-VE: Class 3
Connectors	RJ-45 10BASE-T/100BASE-TX PoE Terminal block for 1 alarm input and 1 output 3.5 mm mic/line in, 3.5 mm line out
Edge storage	SD/SDHC memory card slot (card not included) Support for recording to network share (Network Attached Storage or file server)
Operating conditions	AXIS P3343-V, AXIS P3344-V, AXIS P3346-V, AXIS P3367-V: 0 °C to 50 °C (32 °F to 122 °F), humidity 15 - 85% RH (non-condensing) AXIS P3343-VE/P3344-VE/P3346-VE/P3367-VE: -40 °C to 55 °C (-40 °F to 131 °F), humidity 15 - 100% RH (condensing)
Approvals	EN 55022 Class B, EN 61000-3-2, EN 61000-3-3, EN 55024, EN 61000-6-1, EN 61000-6-2, FCC Part 15 Subpart B Class B, ICES-003 Class B, VCCI Class B, C-tick AS/NZS CISPR 22, EN 60950-1 AXIS P3346-V/P3367-V: IEC 62262 IK10 AXIS P3343-VE/P3344-VE: EN 50121-4, IEC 62236-4, EN 60950-22, IEC 60529 IP66, NEMA 250 Type 4X AXIS P3346-VE/P3367-VE: EN 50121-4, IEC 62236-4, IEC 60529 IP66, NEMA 250 Type 4X, IEC 62262 IK10, EN 60950-22
Included accessories	Mounting and connector kits, Installation Guide, CD with installation tools, recording software and User Manual, Windows decoder 1-user license, smoked transparent cover AXIS P3343-VE/P3344-VE/P3346-VE/P3367-VE: Mounting bracket, weather shield, cable shield, 5 m (16 ft.) network cable with pre-mounted gasket

More information is available at www.axis.com

Accessories – AXIS P33 Network Camera Series

Optional accessories for outdoor models

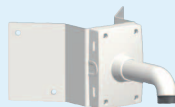
Pendant adapter kit including weather shield



AXIS T91A Brackets



Wall



Corner

I/O audio cable, 5 m (16 ft.)



Axis illuminators

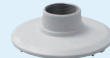


AXIS P33-VE
3/4" NPS Adapter



Optional accessories for indoor models

Pendant adapter kit



AXIS T91A Brackets

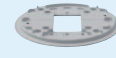


Ceiling

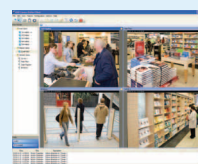


Wall

Mounting bracket



IP51-rated drop-ceiling mount kit with transparent or smoked cover



For information on AXIS Camera Station and video management software from Axis' Application Development Partners, see www.axis.com/products/video/software/